



GLOBAL TIMBER.

Sustainability Report
2020



WE MAKE A POSITIVE DIFFERENCE

Wood improves the indoor climate for millions of people around the world

WE ALWAYS TRADE RESPONSIBLY

Global Timber is FSC® and PEFC™-certified and meets EUTR requirements

SUSTAINABLE QUALITY PRODUCTS

When you choose hardwood, you obtain a quality product that lasts forever

WE ARE PROUD OF OUR SUSTAINABLE APPROACH

We have a vested interest in taking care of nature, because it ensures the source of our wood remains intact.

As a modern, global company, we strive to be leaders in social responsibility, in humane ethics and sustainable conduct in all of our processes – in our native Denmark and around the world.

Global Timber's environmental policy is based on respect for our natural resources and the significance, forests have to the climate, for our generation and for generations to come.

Dear reader,

Welcome, and thank you for your interest in the first edition of our Global Timber Sustainability Report.

We believe, we are all obliged to do an effort to secure a better World tomorrow. Even though we are just a small brick in the big game, we trust that our actions have an influence on our common future.

Global Timber is working in a branch with the only sustainable natural resource. We believe the wood business is part of the solution to the climate crisis the World is facing now.

Neither wood nor Global Timber can solve all problems, but in this report you can read about initiatives we are taking to do our part for a more sustainable future.

This report includes both how we take social responsibility as well as our initiatives towards acting sustainable as a leading global company.

We encourage our customers and suppliers to take action by smaller or larger steps towards a better World tomorrow.

We hope you enjoy the reading.

Best regards



Anders Bitzer
Managing Director



CONTENT

SUSTAINABILITY _ One
Introduction and the
core of our company
08

A SUSTAINABLE FUTURE _ Two
UN goals and certifications
12

**GLOBAL TIMBER'S
ENVIRONMENTAL POLICY _ Three**
Respect for our natural
resources and our commitment
20

RESPONSIBLE SOURCING _ Four
Our approach and how we operate
a robust Due Dilligence System
24

WORKING CULTURE _ Five
Growth, a global team and
an innovative work space
32

Global Timber Headquater

PAYING IT FORWARD _ Six
Towards a sustainable future
36

**WOOD ENHANCES
THE QUALITY
OF LIFE FOR
MILLIONS OF PEOPLE
AROUND THE WORLD
AND WE SUPPORT
GOOD FORESTRY
PRACTICE**

GLOBAL TIMBER

COMPANY INTRODUCTION

Global Timber is a Danish-owned company with three partners in management: Kasper Fredsted, Anders Trap Bitzer and Søren Vinther.

With individual competencies and years of experience in global trading, Global Timber represents a team with profound knowledge within the business of hardwood.

As a company rooted with Scandinavian values, we strive to create continuous growth and expand the business globally, while respecting the environment in the process.

We care

Global Timber is a responsible business partner in the global hardwood business. We strive to conduct socially responsible, ethical and sustainable behavior in all our processes – at home and abroad.

We commit to preserve and protect the hardwood forests for future generations that depend upon nature’s resources.

We care for the safety and well-being of our employees and the local communities we work with worldwide.

THE CORE OF OUR COMPANY

THE GLOBAL TIMBER VISION

Our vision is to bring a sustainable piece of nature into people’s life.

OUR MISSION

Our mission is to ensure sustainability in worldwide hardwood forestry and to continuously provide our customers as their preferred trading partner through knowledge, innovation and customer value.

OUR VALUES

Our values are defined and illustrated by three different >>company brand stamps<<, each one covering our defining values.

Our values can be categorized into three objective categories: Personality, Responsibility and our Global Markets.



SUSTAINABLE MANAGED FORESTS

Sustainable managed forests are the best way to preserve standing forests. The wood taken from these forests is an environmental friendly material and contributes to a better carbon balance. As a global trader, we com- mit to protect forests by using sustainable harvested wood. By carefully monitoring our suppliers and tracing the route of the wood, all the way from forest to our warehouse, we are able to maintain and uplift the traceability of our products.

Documented certified wood

About half of all timber sold by us in 2019 was certified through an international recognized certification scheme.

To realize our vision in *bringing a sustainable piece of nature into people’s life* our business model has strategically been transformed into what we call our **Vision House**.

Realizing our vision towards society, our way of contributing is through both internal and external achievements.



One way to visualize our approach to CSR and integrate it with our business model, is through our *Vision House*.

The foundation of the *Global Timber Vision House* is built upon our expertise in the hard- wood business, an innovative mindset and us striving to create value towards and for our customers. These three attributes have shaped the foundation of our business since our establishment in 2006.

From a robust foundation, standing firm for many years, the ground floor in our *Vision House* is defined as our social environment and our environmental policy – internal commitments as well as external promises.

The last pillar is our purchasing policy and all combined, the three describe our business ethics.

Lastly, the foundation and the three pillars enable us to pursue our mission: *"To bring sustainability in worldwide forestry and being the preferred trading partner for our customers."*

To reach for a healthy and greener planet, the *Global Timber Vision House* is implemented to achieve our CSR goals and a reminder to develop on all levels. As per the illustration, the house will collapse if one or the other is missed in the process.

OUR DEVELOPMENT GOALS

A BROADER FOCUS

Sustainability is defined as “*Development that meets the needs of the present without compromising the ability of future generations to meet their own needs.*”

A sustainable approach to forestry entails that no more trees than the forest’s natural replenishment rate are felled. It also entails that forestry practices balance the needs of the environment, wildlife and forest communities- supporting decent incomes while conserving the forests for future generations.

The Rainforest Alliance

<https://www.rainforest-alliance.org/articles/what-is-sustainable-forestry>

PLAYING OUR PART

Global Timber claims its part in creating a more sustainable world. By doing so, we are focusing on three of the United Nations Sustainable Developmental Goals (SDG) for our planet.

The goals address the global challenges we face, including those related to poverty, inequality, climate change, environmental degradation, peace and justice.

The United Nations 17 SDG’s are all inter-connected and in order to leave no one behind, it is important that we as a society achieve them all by 2030.

As a market lead company, we want to do our part and to contribute in ways we can, to help achieve the this.

<https://www.un.org/sustainabledevelopment/>

THE SUSTAINABLE
DEVELOPMENT
GOALS ARE THE
BLUEPRINT TO
ACHIEVE A BETTER
AND MORE
SUSTAINABLE
FUTURE FOR ALL

UNITED NATIONS



ACHIEVING UN SDG GOALS



No. 13 CLIMATE ACTION
Take urgent action to combat climate change and its impact

By being in the hardwood industry, we already made a serious choice conducting our business around a sustainable material, of which we can be proud of. The small impact we have, pushing more wood into today's constructions will leave a positive mark for future generations.

We are involved in wood working collaborations and we are a member of the Danish Timber Federation and an ambassador for træ.dk. The purpose of these organisations is to market wooden products and to be the forerunner in giving informative knowledge about wood to the market.

Knowledge is key for a global company in the wooden industry to succeed contributing to a more sustainable climate.



No. 15 LIFE ON LAND
Protect, restore and promote sustainable use of terrestrial ecosystems, sustainably managed forests

Being deeply involved in the forestry and its trade, we have the responsibility to promote sustainable forestry. Global Timber does this through our sourcing policy, which we are obligated to follow.

We communicate directly with sawmills and forest owners, in order to secure our products being sourced in accordance to our policy.

Global Timber recognizes and supports the Forest Stewardship Council® (FSC®) and the Programme for the Endorsement of Forest Certification Schemes™ (PEFC™).

Global Timber is a member of the Danish Timber Federation and an ambassador for træ.dk

Read about why wood is genius and how to contribute to a more sustainable life on land (in Danish)

<https://www.trae.dk/artikel/trae-er-genialt/#1>



No. 8 DECENT WORK AND ECONOMIC GROWTH
Promote sustained, inclusive and sustainable economic growth, full and productive employment and decent work for all

Global Timber wants to create a thriving and diverse workplace for its employees and work in close cooperation with suppliers who do the same in their respective countries.

Growing sustainable forestry in tropical countries drives development, creating wealth and growth in often remote rural areas.

We contribute to local value creation through taxes, paying wages and buying from local suppliers.

Read mores about our working culture and diverse work force in capter five.

Certified Timber and UN SDG's

Certified timber is a reassurance that no more tress will be felled than the forest's natural regeneration capacity. Plants and animals are being protected, and the employees are guaranteed decent working conditions.

The best known certification schemes are PEFC™ and FSC®, which have raised the bar in forestry ever since their creation. Being part of these certifications means implicitly supporting the same objectives.

Certifications can become a tool in achieving many of the SDGs. They were originally conceived as a solution that brought together environmental, social and economic interests. Certifications promote sustainable forestry management, with a strong focus on mobilizing consumers in the process.

FSC® for example, has a big contribution to target **15. Life on Land**. However, it is not limited to it. Indirectly, they contribute to the SDGs through the practices FSC®-certified foresters need to follow and the overall impact on forest markets. In others words, FSC® contributes to 14 out of the 17 of the UN Sustainable Development Goals.

<https://fsc.org/sites/fsc.org/files/2019-09/FSC%20and%20SDGs%20revised%20July%202019%20EN%20%281%29.pdf#viewer.action=download>

Similarly, PEFC™ contributes to 9 of the SDG's directly and indirectly. Peter Lathman, chair of PEFC™ International explains:
"Beginning in the forest - our sustainable forest management benchmark forms the basis for the requirements that forest owners must meet to achieve PEFC™ certification (...) From minimum wages for forest workers, equal opportunities for employment and non-discrimination (SDG 8 and 10) and the promotion of gender equality (SDG 5), to enhanced provisions to safeguard the interests of indigenous peoples, and the equitable sharing of benefits arising from the use of traditional and local knowledge (SDG 2 and 4)."

<https://www.pefc.org/news/companies-can-benefit-from-pefc-to-demonstrate-impact-towards-the-sdgs>



The Forest Stewardship Council® (FSC®) is an independent, not for profit, non-government organization established to support environmentally appropriate, socially beneficial, and economically viable management of the world's forests. FSC®'s vision is that the world's forests meet the social, ecological, and economic rights and needs of the present generation without compromising those of future generations.

<https://www.fsc.org/en>



PEFC™, the Programme for the Endorsement of Forest Certification, is a leading global alliance of national forest certification systems. As an international non-profit, non-governmental organization, we are dedicated to promoting sustainable forest management through independent third-party certification.

PEFC™ endorse national forest certification systems developed through multi-stakeholder processes and tailored to local priorities and conditions. We believe that forest certification needs to be local; this is why we choose to work with national organizations to advance responsible forestry. Forest certification is at our core. We provide forest owners, from the large to the small, with a tool to demonstrate their responsible practices, while empowering consumers and companies to buy sustainably.

<https://www.pefc.org>



GLOBAL TIMBER'S ENVIRONMENTAL POLICY

RESPECT FOR OUR NATURAL RESOURCES

Our environmental policy is based on respect for our natural resources and on the importance forests have for the climate.

Wood is a 100% natural resource and as a raw material, nothing is more environmentally friendly. Trees grow by solar energy and generously repay by removing and storing carbon from the atmosphere.

As a living material, wood improves air quality by moderating humidity.

Furthermore, it is proven that wood is good for your health and mental well-being.

<https://www.trae.dk/tema/tema-trae-gavner-klimaet/>

Sustainability First

We source timber from sustainable managed forests. We do this because we understand, that longterm success depends on having an abundant and reliable supply base.

Through responsible use of our resource we aim to become an integral part of the circular economy.

By cultivating both our customers and the people in general, about advantages of using (more) wood in constructions, collectively we

can reduce our dependence on fossil fuels and their consequent carbon emissions.

Wood is a versatile raw material and the only renewable construction material. Wood is recyclable, biodegradable and it can be used to increase a building's "life cycle assessment."

<https://link.springer.com/article/10.1186/s40068-018-0109-x>

At Global Timber, respecting the environment also entails full compliance with environmental laws and regulations, as a minimum level of performance. We only purchase from approved suppliers complying with EU Legal Requirements (European Timber Regulation, EUTR).

The European Union Timber Regulation (EUTR) aims to counter illegal logging and associated trade in member states, and ultimately contribute to sustainable management of forests and reduced emissions from deforestation and forest degradation beyond EU borders.

<https://www.global-traceability.com/>

Furthermore, we hold a Due Diligence System in place and demand transparency in our entire supply chain.

Our **Due Diligence System** ensures:

- The wood we source is legally harvested
- We do not violate traditional or civil rights
- We have transparency in our chain of custody
- We have verified documentation to substantiate legality



Illustration of the touch points within Global Timber's Due Dilligence System

The forest of origin and timber harvesting

Knowing where the timber originates from and that it is felled legally.

In most countries, it is required to have a logging permit.

Timber processing activities

The processing of timber should be in accordance to legal requirements/ sawmills must posses the required licenses.

If the timber is being processed in different locations, due diligence should include all of them.

Trading activities & Timber transportation

Assure trading and transport are licensed and all required documentation is in place.

The goal of Global Timber's Due Diligence System is to allow traceability from forest to final customer, through the entire supply chain.

PROTECTING THE FOREST WITH ECONOMIC RETURN

When sustainable managed, all types of forests are renewable ecosystems providing essential goods and services to people world-wide.

Working closely with sawmills around the world, we help grow the forestry sector and sustain rural communities. By paying a fair, competitive price for primary producers’ products, we provide them with an incentives for keeping the forest standing. By bying a wide range of specifications and grades of timber, we help producers minimize waste and get the best use of their logs.

We care about the people working at the sawmills and productions sites. To obtain this, we observe the working conditions at the sawmills during our visits.

According to UN-research, many drivers of deforestation lie outside the forest sector and are rooted in wider, social and economic issues. This includes challenges related to reducing poverty, urban development and policies favouring land uses, which produce higher and more rapid financial returns, such as agriculture, energy, mining and transportation.

https://www.un.org/esa/forests/wp-content/uploads/2016/12/UNSPF_AdvUnedited.pdf

We support legislations and certifications for sustainable forestry and make sure that sourcing is in accordance to the highest international standards and local laws in our partner’s countries.

SUPPORTING SMALL -AND MEDIUM SIZED PRODUCERS

We strive towards purchasing as much verified and certified timber as possible. When a certified purchase is not possible, our goal is to find suitable alternatives. These alternatives could be either local third-party verifications, usually from non-govenmental organisations from the countries of harvest or purchase a lesser known specie, where the risks of illegal harvests are low.

Another way to pursuing more sustainability, is to motivate local suppliers to support us in this matter. In dialogue, we hope to achieve positive change in the local communities, push for more certifications and transparency of the operations.

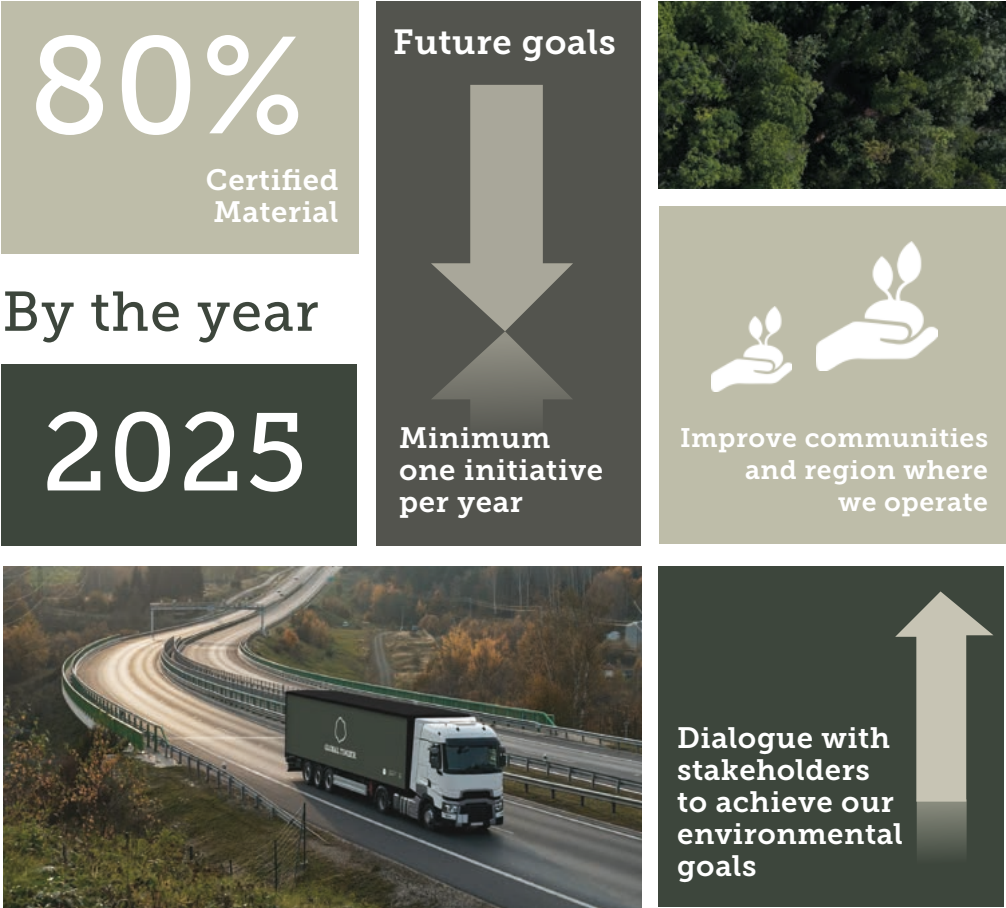


Illustration of Global Timbers internal goals for a more sustainable furture.

Future goals

Being one of the market leaders, we should claim our responsibility and be ambitious on behalf of our future planet. Committing to a more sustainable future and setting internal goals, should help us set an example for our external stakeholders.

OUR COMMITMENT

- Internal goals by 2025

- A target of 80% certified material by 2025
- Every year we will support an initiative that brings improvements in the communities and regions where we operate.
- Establishing, maintaining and intensifying dialogues with stakeholders and employees to ensure and achieve our environmental objectives and goals through continuous improvement.

RESPONSIBLE SOURCING

OUR APPROACH

Our key product is quality hardwood, which we import and export across 30 countries and 6 continents.

Our purchasing team procure high-quality wood all around the world. At Global Timber we only purchase from approved suppliers complying with EU Legal Requirements.

We want to raise the bar of procurement in order to eliminate illegally logged timber from the market.

We support legislations and certifications for sustainable forestry and make sure that sourcing is in accordance with the highest international standards and local rules.

INNOVATION

We endorse innovation. We aim to promote and introduce lesser known wood species, including plantation wood in our product portfolio.

In 2019, we introduced FSC® Guariuba decking as well as Lignia®, an engineered timber that can replace teak, to our portfolio.

FSC® Guariuba



Guariuba is a beautiful light brown specie from South America.

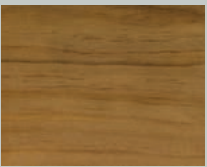
The structure in the wood is nice and calm. After a few weeks in the sun, the wood turns golden brown and draw parallels to teak.

The specie is easy to process compared to other hardwood species.

Guariuba is a good and stable specie for decking.

References CIRAD Forestry Department

Lignia®



Lignia is a modified wood specie produced by taking sustainable FSC® softwood and converting it into a product similar to hardwood.

Lignia combines technology and nature to help preserve the tropical rainforest.

Besides being a substitute for the maritime Burma Teak. Lignia has many uses and is somewhat similar to Western Red Cedar.

www.lignia.com

COMPLIANCE

The European Union Timber Regulation (EUTR) is a common European regulation with the purpose of preventing illegal logging. All companies placing orders of wooden origin for the first time, on the EU/EEA (European Economic Area) market, are comprised by the regulation and must be able to document that their products do not derive from illegal logging.

OUR RESPONSIBILITY

According to the law, Global Timber is an “operator” for all imports that arrive on EU market. EUTR requires Global Timber to maintain a regularly updated Due Diligence System and provide transparency in the supply chain. We have been verified by the competent authority in Denmark on several occasions and we can provide our customers all information requested by law.

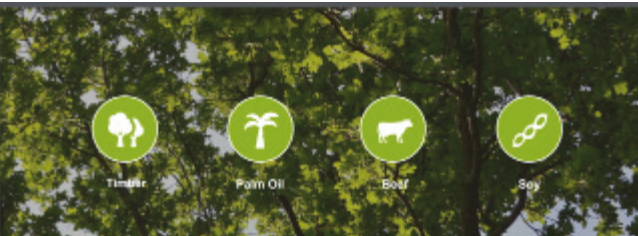
We only purchases from approved suppliers complying with EUTR’s Legal Requirements. In order to do this, our Due Diligence System assures full traceability in the custody chain.

THE INDUSTRY’S PERSPECTIVE

Global Timber wants to raise the bar of procurement. We want to ensure that only legal and sustainable tropical hardwood is traded through us.

We approach our Due Diligence Process using one of the most endorsed guidelines on the market - Nepcon’s Sourcing Hub model.

The model differentiates between high and low risk timber, depending on the country of harvest. Nepcon’s Sourcing Hub helps us work strategically with our due diligence, by focusing our efforts where it is mostly needed, based on the risk category.



Learn more about using the Nepcon Sourcing Hub in a Due Dillingence process - nepcon.org/da/node/1907

As an actor in global timber trade, we share the opinion that the general perception of tropical timber is a major challenge for the entire sector. We want to support honest and smaller producers to continue doing business and create positive change in their countries.

In a study conducted by Global Timber Forum in 2019, small and medium wood businesses across Latin America indicated the reputation of the sector as a major impediment for export. This makes it increasingly difficult for less resourceful local producers to sell their products on the external global market.

This is done in the detriment of timber and in favour of less sustainable materials, such as plastic or concrete.

<http://www.gtf-info.com/uncategorized/mapping-europes-sustainable-tropical-timber-foot-print-and-growing-its-global-impact/>

ORIGIN

The forestry sector is often blamed for deforestation, even though it has nothing to gain from deforestation. Research has shown that the major contributors to deforestation are agribusinesses and mining.

GLOBAL TIMBER SOURCED WOOD

TROPICAL SPECIES

Sustainable Forest Management is the ideal tool to preserve forests and gives local people an incitement for keeping the trees standing. Our trade with tropical timber is based on decades of experience and a special relationship with selected suppliers.

South America

A special focus in our company is placed on Brazil, where we run checks for every new chain of custody. Using satellite pictures, we can pinpoint the exact forest where the timber comes from. Drawing the transportation route from forest to harbour, when it is shipped to us, we can make sure that all companies involved in the chain are legally operating.

In addition to Brazil, Peru is another Latin American country where Global Timber has entered a close collaboration with an FSC®-certified sawmill.

Africa

West African hardwoods are popular and Global Timber collaborates with several important sawmills in this region, including in the Congo Basin.

Asia

We have done business in Asia for many years and with our own office since 2013. In 2018 Global Timber Asia Sdn. Bhd was created as a subsidiary independent company under Global Timber Group. In the Asian continent we source high-quality tropical timber from South Asia, such as Meranti, Merbau and Bangkirai.

TEMPERATE SPECIES

Temperate wood is not under the same pressures as tropical wood and the countries where we source most of our temperate timber are on the low-risk scale, according to Nepcon’s Sourcing Hub.

North America

From North America we primarily source Maple, Ash, Basswood, Walnut, White and Red American Oak. Other lesser popular species are available in smaller quantity and on request. From Canada the beautiful Western Red Cedar is sourced.

Europe

From Europe and Scandinavian countries we source Maple, Ash, Beech, Birch, Douglas and a very popular specie – Oak.



DUE DILLIGENCE SYSTEM

A ROBUST DUE DILLIGENCE SYSTEM

We operate a robust Due Diligence System, in which we verify the origin of the timber we import, in order to exclude controversial sources.

The following sources are considered controversial:

- Illegally harvested wood
- Timber coming from territories in which traditional and civil rights are violated
- Territories and regions with armed conflicts
- Natural forests that have been converted to plantations
- Forests that are planted with genetically modified trees

We only do business with partners whom we have reasons to trust as acting with due diligence and we continuously progress towards more certified products from all our suppliers.

As a rule, executive managers or staff in similar functions convicted by a final binding court decision for illegal wood harvesting or corruption, will be excluded from our supply chain.

OUR APPROACH



Step I Information gathering

As a first step, we collect information from our suppliers. Starting with a supplier declaration form. The declaration contains a commitment not to source wood from controversial sources, as well as information on the origin of the wood at sub-supplier level.

We collect details of the suppliers, such as address, VAT number, as well as information about the administrator. We also collect information about the certification status of the supplier.

Step II Assessment of the risks

Based on information collected from step one, we conduct a risk assessment. The risk assessment is done on country and supplier level.

Step III Risk Mitigation Tools

Using the results from the risk assessment, we have developed a set of measures in order to mitigate the risk of controversial material inflow to a negligible level. Suppliers and deliveries for which the risk cannot be mitigated are not accepted in our supply chain.

One of the most important risk mitigation tools we introduced for Brazil is Legal Verification Programme.

The Legal Verification Programme* is a verification of every new chain of custody from Brazil. Other risk mitigation tools include visits to the sawmills, on-site auditing and media monitoring.

*The Legal Verification Programme consist of:

- Documental analysis
- Validity and authenticity of documents
- Routes of transportation
- License plates of vehicles
- Satellite pictures of the harvest site
- Analysis of the infrastructure of the harvest
- Volume conversion

WORKING CULTURE

A GLOBAL TEAM

Our employees are a key-factor for the success of our business. Being a trader specialized in hardwood, the knowledge and expertise of our people are very important.

Our management is represented by three partners, all sharing the same vision for the company and the passion for hardwood. The three partners have many years of experience in national and international trade, with sustainability in focus. Global Timber has a flat organizational structure and the management style is participative.

Our growth depends on attracting and retaining the right people. We strive to install a strong balance between performance, behaviour and learning. Our employees are the key to our success, as they are the ones who will help us act accordingly to our vision and help us stay competitive.

A GLOBAL WORKING ENVIRONMENT

Given our continuous growth, from when the company embarked on its journey in 2006, we are increasingly becoming more internationally focused. We have six different nationalities working at our headquarter in Aarhus.

Our employees are represented by nationalities like German, Malaysian, Vietnamese, Romanian, Chinese and Danish. Having a diverse team implies thinking and acting globally. Diversity is important for our business to thrive, as it also gives us many advantages. One of them is access to market differentiation in ways of communicating our product and brand.

Cultural awareness is another. These two lays the foundation for further growth and success of a local company winning global market shares.

A PROGRESSIVE WORKING CULTURE

Traditionally, the timber industry has been a man dominated sector. However, the industry is slowly making progress towards a more equal gender distribution.

We are proud to say that our company has made important steps in this direction. A third of our employees is represented by women. Creating a gender balanced workplace is beneficial for both business and society. Wellbeing at the workplace is an important factor on achieving gender equality, so we are offering our employees equal rights to flexible working hours and locations, access to experienced mentors and reward based on the outcomes achieved.



REFLECTING OUR VALUES

For our team to generate a creative and beneficial outcome pushing the company forward, we needed a physical environment inviting collaboration and innovation. Reaching for this goal, we designed and decorated our company's headquarter in close partnership with Ravn Architects. A carefully mix of our own materials has been used and installed in innovative ways, to serve two purposes: On one hand, to have an inspirational effect for our employees, on the other, to work as an insightful hardwood example-house for visitors.

GLOBAL TIMBER HQ

The building, which is home to both Global Timber and Fredsted Floors, was inaugurated in 2019. The two companies are placed in separated buildings with an intersection point where the joint facilities are placed.

Each building is getting its own identity already from the facades. While Global Timber's is covered in wood from own import, Fredsted Floors is an open and transparent glass facade.

The architecture of the office encourages our staff to walk through its space, to be curious, explore and communicate with our visitors about findings and ideas. Our physical frame reflects our openness, collaborative working culture and our passion for hardwood.



BY CHOOSING THE HARDWOOD INDUSTRY WE MADE OUR **FIRST CHOICE** IN BUILDING OUR BUSINESS ROUND A SUSTAINABLE MATERIAL

—

SØREN VINTHER

SALES DIRECTOR SCANDINAVIA & PARTNER, GLOBAL TIMBER

PAYING IT FORWARD

We believe that the small impact we have pushing more wood into today's constructions will leave a positive mark for coming generations.

Together with our production partners our joint awareness of environmental materials encourages for a greener planet.

TOWARDS A SUSTAINABLE FUTURE

We have embraced sustainability as a company awareness point. Initiatives have been implemented and we will continue to do so, towards a sustainable future for our company, employees and our customers.

Implemented initiatives

Warehouse

We have replaced all five of our old classical diesel forklift trucks with electrical ones. The consumption and working environment gives the warehouse a more environmental-friendly advantage.

We reuse pallets and if we are not able to reuse packaging, we use sustainable wrapping made from recycled plastic.

Office

The office was designed right from the beginning as an intelligent passive building, with minimal consumption and environmental friendly materials. It starts with the orientation of the house to make the best use

of sun and shade. Then having two companies sharing the canteen, meeting rooms etc. is getting more and more appreciation in the sharing economy's of today.

Down to a more practical level, all the lights in the building are high efficiency LED lights, with an integrated intelligent system that automatically regulates it accordingly with the light coming from outside.

We have installed an environmental station in our warehouse in order to sort all general waste from daily operations and employees' consumption.

Towards society

We house different events and workshops to educate newbies in the wood-working industry, to inform them about the nature of our products and how to use the correct species for desired looks and longevity.

Towards customers

In relation to a more sustainable choice, our sales team are offering our customers certified products, alternatives (if available) and in some cases lesser known species.

Even though our practical efforts are small initiatives, they represent a step in the right direction and collectively have a larger impact. We strive to be a company that pays respect to our natural resources and contributes towards a healthier planet.

—





CONTACT

Phone +45 48270000
mail@globaltimber.dk

HEADQUATER & WAREHOUSE

a/s Global Timber
Michael Drewsens Vej 1
8270 Højbjerg, Aarhus
Danmark

corporate.globaltimber.net